

# Building on Success



1994-95 Spring Hill College  
Basketball Media Guide

THIRSTY?

THIRSTY?

THIRSTY?

THIRSTY?

Always Coca-Cola®





Dear Alumni and Fans,

On behalf of the Spring Hill College family, I extend to you a warm welcome for another great season of Badger Basketball.

Last year's winning basketball season was capped by the College's third consecutive NAIA District 30 championship. Many of us watched the Badgers on television as they rose to new heights and sparked excitement on campus and in the city of Mobile when they played in the NAIA National Division I Basketball Championships in Tulsa, Okla. We anticipate more of the same excitement this year.

The 1993-94 Badgers established an outstanding 22-10 record led by Head Coach Joe Niland. With Coach Niland at the helm and seven returning players, prospects for another winning season are excellent.

Our Badgers are winners both on and off the court. Last year's team was also involved in many community service activities. With student athletes of this caliber on our campus, it is becoming more apparent each year how athletics can contribute to the intellectual, spiritual and healthy development of Spring Hill student leaders.

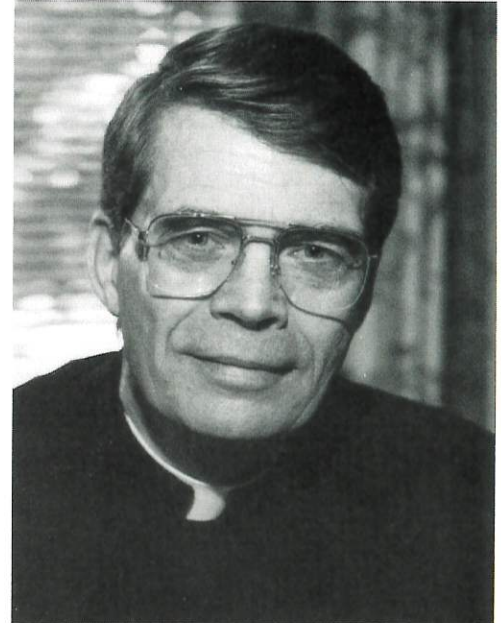
We have a lot to cheer about this season on the Hill, and hope to see you in the crowd each time the Badgers take the home court.

Thank you for your support!

Sincerely,

A handwritten signature in black ink that reads "W. Rewak" followed by a stylized flourish.

William J. Rewak, S.J.



William J. Rewak, S.J., president

**Spring Hill College**  
**Founded 1830**

**4000 Dauphin Street**  
**Mobile, Ala. 36608-1791**  
**(205) 380-3485**

# The Spring Hill Experience

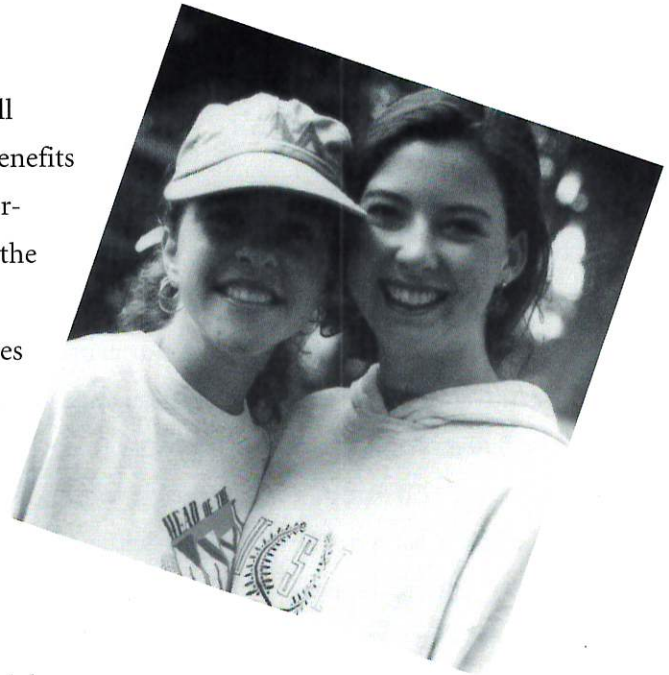
Spring Hill College, the Jesuit college of the South, is the oldest four-year college in Alabama and the fifth oldest Catholic college in America. A Spring Hill education is deeply grounded in the liberal arts, but also benefits from our 450-year Jesuit heritage, and our emphasis on personal values, moral and ethical questioning and service to the community.

With fewer than 1,000 undergraduates pursuing degrees at SHC, students have the advantage of learning in an intimate setting. Classes average 15 students and student-faculty ratio is 14-1. This close-knit community of friends promotes personal interaction between students and their peers, advisers, administrators and teachers.

At Spring Hill, students can take advantage of our special location. Mobile offers the charm of the deep South and the close proximity of the beautiful Gulf Coast beaches. New Orleans is just two hours away.

A Spring Hill education benefits students who routinely intern at the top banking and financial institutions in Mobile and also at area newspapers and radio and television stations.

The Jesuit heritage, special location, and personal size are a part of what we call the Spring Hill Experience. Our students love every minute of it. Our graduates benefit every day from it.

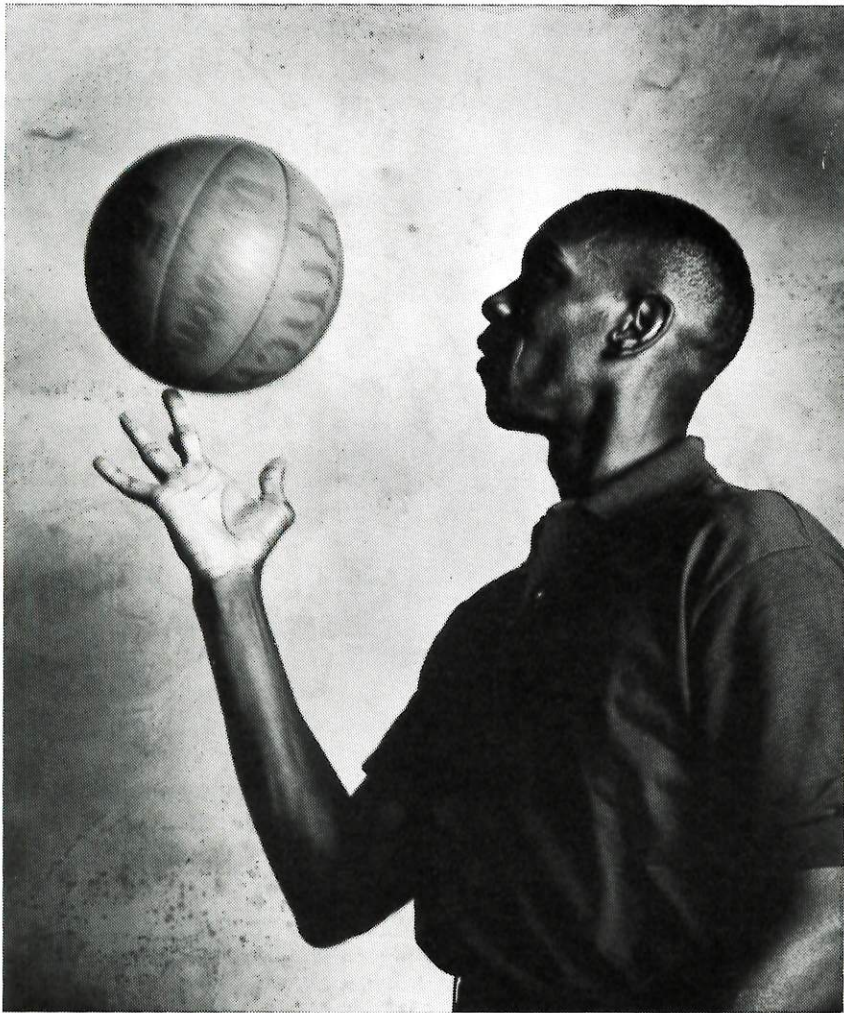


*Spring Hill College*  
*94 Badgers*

# WHY WHAT I TEACH KIDS WILL MAKE YOU BELIEVE IN THE QUALITY OF AN AMSOUTH RELATIONSHIP.

[ Oliver Robinson, AmSouth Banker ]

"I think I have a story to tell kids. I played pro basketball. But, I got hurt and that ended my career. Without an education I would've had nothing to fall back on. I spend a lot of time telling kids this: Get



an education. And get serious about it. Because an education is not only something to fall back on. It's something that will spring you forward."

Here's to AmSouth Banker Oliver Robinson, who believes that the more you put into a relationship the more you get out. Such is the case in life. Such is the case in banking. Relationship Banking from AmSouth. It'll make you believe in our quality.

*The more AmSouth relationships you have, the better the deals you'll receive. Like discounts on loans, free Telephone Banking for six months, and even cash rebates on mortgages with AmSouth checking. And that's only the beginning. AmSouth. Quality Relationships. Quality you can believe in.*

**AMSOUTHBANK®**  
You'll Believe In Our Quality.



**Joe Niland**  
Men's Head Coach

**Alma Mater**  
Buffalo 1981

**Record & Years**  
22-10, 1

**Entering his second year as the Badger head coach,** Niland has the difficult task of once again leading the Badgers to the NAIA National Tournament.

Niland led the Badgers to a 22-10 record during his first year and continued the winning tradition which had been established before he arrived at "the Hill."

Niland is familiar with programs rich in tradition. From 1990 to 1993, he assisted Gordon Gibbons at Florida Southern College in Lakeland, Fla., where the Moccasins were 73-20 in three seasons, winning two Sunshine State Conference Tournament Championships and earning two berths in the NCAA Division II National Tournament. In 1990-91, FSC finished No. 4 in the final poll. From 1988-90, Joe was assistant to Richard Schmidt at the University of Tampa where the Spartans earned two SSC titles and two NCAA National Tournament appearances. In 1989-90, they were ranked No. 1 in the NCAA's final poll.

The Buffalo, N.Y., native is no stranger to Jesuit higher education. Joe's father starred at Canisius College, a Jesuit school in Buffalo, from 1938-42 and returned to coach the Golden Griffins from 1947-54. The senior Niland was also the player personnel director and chief scout of the Buffalo Braves (NBA) from 1969-74.

Joe's uncle, Thomas J. Niland, was the athletic director at LeMoyne College, a Jesuit school in Syracuse, N.Y., from 1947-92. The Niland family association with Jesuit institutions has continued with Joe's younger brother, Dave, working as an assistant at Canisius College since 1992.

Joe is married to the former Ellen Bonin and they have three children: A.J., 10, Katelin, 7, and Jake, 2.

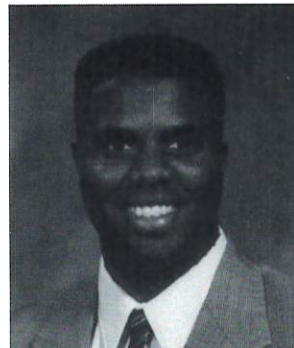


**Frank Sims**  
Athletics Director

**Coach Sims begins his tenth year at Spring Hill College** as head baseball coach and his second year as athletic director.

Before joining Spring Hill in 1985, Sims was an assistant coach at Eastern Illinois University in 1976, head baseball coach for Sparta High School from 1977-1980, head baseball coach at Milton College in 1982 and assistant coach at the University of Wisconsin Whitewater from 1983-1985. He earned his master's degree from Morehead State University in Kentucky.

Coach Sims and his wife, Dana, have four children, Drew, Sarah, Kelsey, and Brian.



**James Walker**  
Women's Head Coach

**Alma Mater**  
Morehouse 1990

**Record & Years**  
15-14, 1

**James Walker begins his second season as Lady Badger** head coach this year. During his first season, Walker directed Spring Hill to its second ever GCAC playoff appearance. He assumed the Lady Badger head coaching position following a three-year stint as assistant coach.

Walker strives to develop his student-athletes both in the classroom and on the court. "Basketball and education go hand-in-hand," he says.

A native of Jackson, Tenn., Walker earned his bachelor's degree in business administration from Morehouse College and a master's degree in sports management from the United States Sports Academy. At Morehouse, Walker lettered in basketball and led the 1989-90 Maroon Tiger team to a NCAA II Final Four appearance. He ended his career as the all-time assist leader at Morehouse with 712.

The 27-year-old teaches activity courses in addition to coaching. He and his wife, Kimberly, oversee the College's Mirror Lake Apartments.

# Assistant Coaching Staff

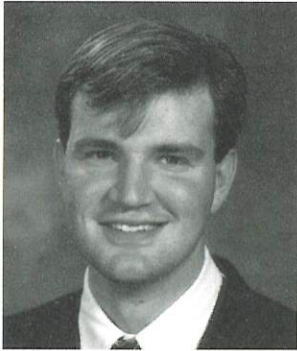
---



**Derek Wright**  
Assistant Basketball Coach

**Coach Wright is entering his second year as an assistant at Spring Hill.** The Ponce City, Okla., native earned his bachelor's degree from Spring Hill in 1994. Wright was a two-time All-Conference player at Northern Oklahoma College before transferring to Spring Hill.

Wright's duties include on-the-floor coaching, recruiting and academic support.



**Sam Coates**  
Student Assistant

**The Baton Rouge, La., native is finishing his bachelor's degree in education** at Spring Hill while assisting with the men's basketball program. Coates was a four-year letterman at Spring Hill and his coaching duties include on-floor coaching and scouting.



**Mark Hubbard**  
Student Assistant

**The Ocean Springs, Miss., native is finishing his degree in education** at Spring Hill while assisting with the men's basketball program. Hubbard was a two-year letterman at Spring Hill, even though his last season was cut short with a season-ending knee injury. His duties include on-the-floor coaching.

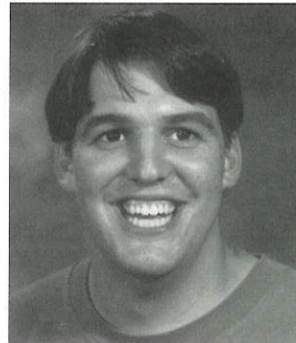


**Terry Fowler**  
Assistant Women's  
Basketball Coach

**Coach Fowler begins his second year as the Lady Badgers' assistant coach.** Fowler is responsible for scouting and recruiting in addition to his on-the-floor coaching duties.

Coach Fowler is a former Lane College standout, where he was twice named to the SIAC All-Conference Team.

Terry, a native of Jackson, Tenn., received his bachelor's degree in business administration from Lane College and a master's degree in sports management from the United States Sports Academy.



**John Braham**  
Student Assistant

**John Braham is beginning his first year as a member of the Lady Badgers coaching staff.** John, a Spring Hill junior, assists the Lady Badgers while he completes his bachelor's degree. Braham is responsible for **statistical** information and on-the-floor coaching duties.

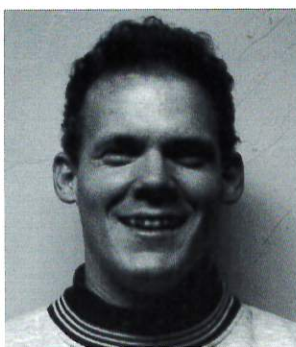
Braham is a native of Atlanta, Georgia, and a graduate of Saint Pius X School.

# Athletics Staff

---



**Mark Priede**  
Men's and Women's Golf  
Sports Information Director



**Brian Ellison**  
Athletic Trainer



**Lorian Murdock**  
Athletic Secretary



**Brooks Green**  
Men's and Women's Tennis



**Ron Brill**  
Men's and Women's Soccer



**Ellis Ollinger**  
Sailing



## Directory

---

<b>Enrollment:</b>	1,000
<b>National Affiliation:</b>	NAIA Division I
<b>Conference:</b>	Gulf Coast Athletic
<b>Nickname:</b>	Badgers
<b>Colors:</b>	Purple/White
<b>Home Facility:</b>	St. Paul's Gym (1,000)
<b>President:</b>	William J. Rewak, S.J.
<b>Athletics Director:</b>	Frank Sims
<b>Faculty Athletics Rep.:</b>	Dr. Robert MacAleese
<b>Athletics Trainer:</b>	Brian Ellison
<b>Sports Information Director:</b>	Mark R. Priede
<b>Athletics Phone Number:</b>	(205) 380-3485

## Basketball Staff

---

<b>Men's Head Coach:</b>	Joe Niland
<b>Record/Years at SHC:</b>	22-10, 1
<b>Best time to contact:</b>	9:30 a.m.-3 p.m.
<b>Assistant Coach:</b>	Derek Wright
<b>Women's Head Coach:</b>	James Walker
<b>Record/Years at SHC:</b>	15-14, 1
<b>Best time to contact:</b>	9:30 a.m.-3 p.m.
<b>Assistant Coach:</b>	Terry Fowler
<b>Student Assistants:</b>	Sam Coates Mark Hubbard John Braham

# 1994-95 Badger Season Outlook



Success continues at Spring Hill with the men's basketball program earning its third consecutive Gulf Coast Athletic Conference title and its third appearance in the NAIA National Basketball Tournament last season. The Badger cagers have earned the respect of every team in the conference as well as national recognition with their tournament appearances.

This year's squad will be challenged to continue the winning ways established by the teams from the past three years. The foundations of last year's championship team, **Ronald Gomez** and **Marc Allen**—both of whom earned All-American Honors—are no longer here to provide support.

The Badgers return three starters from last year's team and they will be responsible for taking the leader-

ship role of this year's team.

Senior guard **Bobby Parker** who stepped up and provided the Badgers with an offensive spark and great defense last year must continue to improve. The Badgers will be looking for Bobby to lead them on both ends of the floor. Sophomore **Eric Lovett** will lead the Badgers from the point. Eric had an outstanding freshman year in which he started every game at point guard. He gave the Badgers the stability needed at that position.

Sophomore **Eddie Timmons** was hampered by injuries most of last year. He will be moving from the swingman to his natural position in the post. The Badgers will be looking for Timmons to be a scoring threat from the post and to replace the production lost by the graduation of Allen and Gomez.

The Badgers' strength this year will be in the back court with returning lettermen **Stephen Sterling** and **Chad Frazier** who will be looked to for instant offense. Both Sterling and Frazier are outstanding shooters but must improve their defensive skills. Also look for newcomer **Russell Minnick** to step in and provide the Badgers valuable depth coming off the bench.

The Badgers have also added senior transfer **Dorian Lee** to the roster. Dorian is a tremendous athlete and will provide the Badgers with another scorer.

If there is a concern for Niland, it will be with the inside play. Joining Timmons inside will be seniors **Jason Roberts** and **Demetrics Tyson**. Both Tyson and Roberts saw extensive action last year in back-up roles. For the Badgers to be successful these two players must step their games up to the next level. The Badgers will be very young on the bench, but look for **Jeff Dickman, Al Cueto, and Mike Schweitzer** to provide strong back up in the post position.

The Badgers have a good blend of experience and youth, and for them to make it four consecutive years to the National Tournament they must survive **one of** the toughest NAIA schedules in the country. **They are** also matched against St. Mary's College, a participant in last year's National Tournament as well as **AUM, Faulkner and Montevallo.**

In the past, this tough pre-conference schedule has helped prepare the Badgers for its tough GCAC schedule. If the Badgers can **blend as a team as** the year progresses, look for them to **make a run at their** fourth title and yet another **berth in the NAIA National Tournament.**



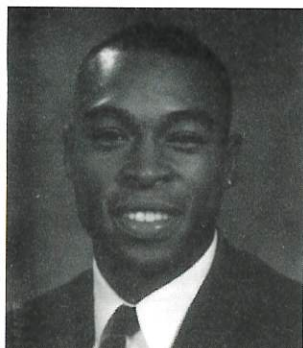
Head Coach Joe Niland walks the sideline at the NAIA National Tournament in Tulsa, Okla., last year.



**1994-95 Badger Basketball Team**

#	Players	Ht/Wt	Class	Pos.	Hometown	Previous School
10	Bobby Parker	6'3"/185	SR	G	Theodore, Ala.	Theodore H.S.
11	Stephen Sterling	5'11"/175	JR	G	Baton Rouge, La.	Catholic H.S.
13	Chad Frazier	6'1"/185	SO	G	Richland, Miss.	Richland H.S.
14	Eric Lovett	6'4"/200	SO	G	Mobile, Ala.	Vigor H.S.
15	Demetrics Tyson	6'4"/215	SR	F	Loachapoka, Ala.	Lander College
22	Russell Minnick	5'11"/170	FR	G	Abbeville, La.	Vermillion H.S.
23	Dorian Lee	6'3"/190	SR	G	Mobile, Ala.	U. North Florida
30	Dwight Ladd	6'2"/170	FR	G	Saraland, Ala.	Vigor H.S.
32	Jason Roberts	6'6"/210	SR	F	Franklin, Tenn.	Columbia State J.C
33	Ed Timmons	6'7"/220	SO	F	Slidell, La.	Salmen H.S.
40	Mike Schweitzer	6'5"/185	FR	F	Jupiter, Fla.	Jupiter H.S.
44	Josh Ferman	6'5"/185	FR	G	Gulf Shores, Ala.	Foley H.S.
50	Al Cueto	6'6"/215	FR	C	Miami, Fla.	Belen H.S.
55	Jeff Dickman	6'5"/210	FR	F	Mobile, Ala.	Davidson H.S.

*Spring Hill College*  
*94 Badgers*

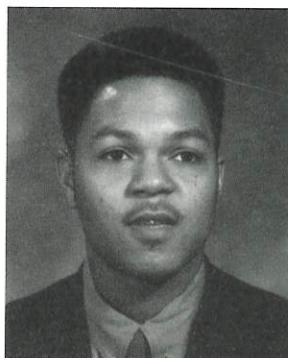


**#10 Robert Parker**  
6'3" 185 lb.  
Senior Guard  
Theodore, Alabama

**Bobby is a tremendous athlete who can be an explosive offensive player.** Bobby set the school record for most 3-pointers made in a single game with nine against the University of West Florida. Bobby must maintain his consistency from last season for the Badgers to be successful.

**High School:** Bobby played for Coach Tony Combs at Theodore High School in Theodore, Ala.

**Personal:** Bobby is majoring in business marketing.

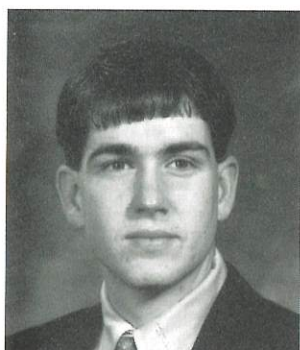


**#11 Stephen Sterling**  
5'11" 175 lb.  
Junior Guard  
Baton Rouge, Louisiana

**Stephen is a scorer pure and simple. Stephen has good range on his jumper** and has improved as a defensive player. Stephen had a season high 21 points against the University of Mobile in the GCAC Championship game. For the Badgers to be a success, Stephen must step up his defensive play and be a factor on the offensive end.

**High School:** Stephen played high school basketball for Coach Glen Randow at Catholic High School in Baton Rouge, La

**Personal:** Stephen is a communication arts major.

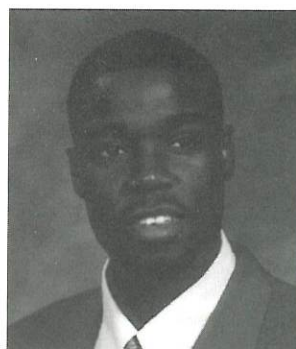


**#13 Chad Frazier**  
6'1" 185 lb.  
Sophomore Guard  
Richland, Mississippi

**Chad is a very good long-range shooter who was a pleasant surprise his freshman year.** He will be counted on to provide more than his jump shot this year. Look for Chad to see a lot of playing time.

**High School:** Chad played for Coach Richard Wilkinson at Richland High School in Richland, Miss.

**Personal:** Chad is currently majoring in history.

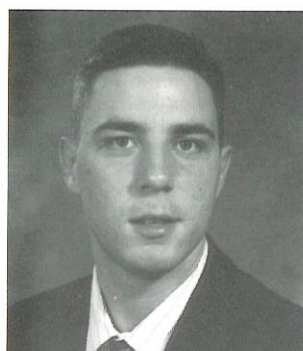


**#14 Eric Lovett**  
6'4" 200 lb.  
Sophomore Guard  
Mobile, Alabama

**Eric was put in a tough spot last year as the Badgers' starting point guard.** He is a great athlete and has a great feel for the game. Eric set a new school record for steals last year and will be asked to carry an even bigger load on offense this year.

**High School:** Eric played high school basketball for Coach Dwight Ladd at Vigor in Prichard, Ala.

**Personal:** Eric is a pre-engineering major.

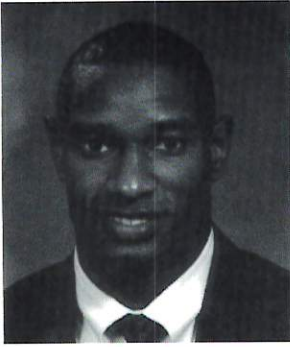


**#33 Eddie Timmons**  
6'7" 220 lb.  
Sophomore Forward  
Slidell, Louisiana

**Intensity and leadership are what this sophomore brings to the floor.** Eddie will move back to his natural position in the post this year. His success in the post will determine the Badgers' success this year.

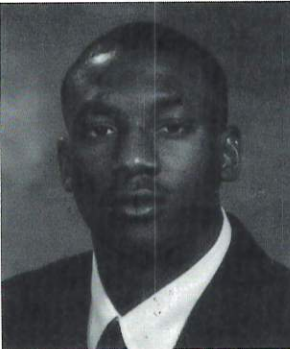
**High School:** Eddie played for Coach Jay Carlin at Salmen High School in Slidell, La.

**Personal:** Eddie is a pre-engineering major.



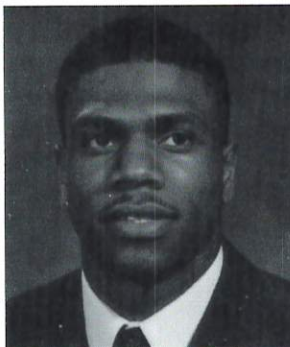
**#22 Russell Minnick**  
5'11" 170 lb.  
Freshman Guard  
Abbeville, Alabama

**Minnick hails from the same high school as NAIA All-American Ronald Gomez.** Russell is a tremendous athlete, earning All-State honors in four sports. Averaging 23 ppg last season, he is expected to contribute as a valuable back up this year for the Badgers.  
**High School:** Russell played for Coach Eric Mouten at Vermillion Catholic in Abbeville, La.  
**Personal:** Russell, the son of Bertha Breux, is an English major.



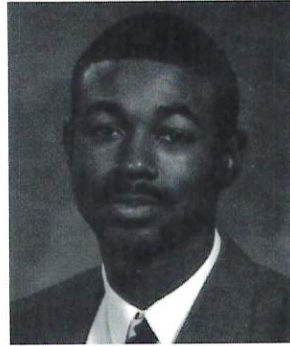
**#15 Demetrics Tyson**  
6'4" 215 lb.  
Senior Forward  
Loachapoka, Alabama

**'D' is a strong scorer from 15 feet and in. He was the defensive stopper** in the post last year and will be looked upon for solid play on both the offensive and defensive ends of the floor.  
**High School:** Demetrics played for Coach Larry Dichaira at Loachapoka High School.  
**Personal:** Demetrics' major is business.



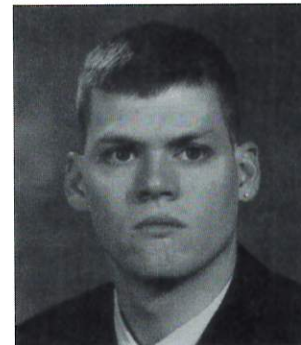
**#23 Dorian Lee**  
6'3" 190 lb.  
Senior Guard  
Mobile, Alabama

**Dorian transferred from North Florida and is well-known in Mobile** basketball circles. A great athlete, he will compete for a starting spot with the Badgers.  
**High School:** Dorian prepped at Vigor and earned both academic and athletic honors. He played for Coach Oscar James at Bishop State Junior College.  
**Personal:** Dorian is the son of Frank and Doris Lee and is majoring health science.



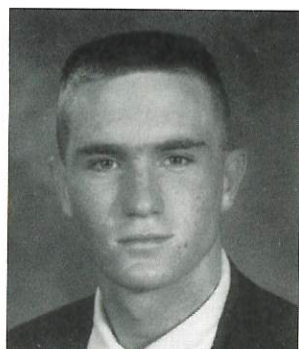
**#30 D.J. Ladd**  
6'2" 170 lb.  
Freshman Guard  
Saraland, Alabama

**The Vigor pipeline to "the Hill" continues with the heady and solid basketball** game D.J. brings to Spring Hill. He was an standout guard at Vigor and was named to the All-County team. D.J.'s biggest adjustment will be the speed at which the college game is played. Look for D.J. to help the Badgers in a back-up role.  
**High School:** D.J. played his high school basketball for his father Dwight Ladd at Vigor High School in Prichard, Alabama.  
**Personal:** D.J. is the son of Dwight and Martha Ladd and is majoring in pre-engineering.



**#32 Jason Roberts**  
6'6" 210 lb.  
Senior Forward  
Franklin, Tennessee

**Roberts was a transfer from Columbia State Junior College.** Jason had a tough year with injuries and adjusting to the Badgers' style of play. He will be looked to for a strong senior season. Jason is a great athlete who can score both inside and out. The Badger season will depend heavily on this senior's play.  
**High School:** Jason played high school ball for Coach Jim Ringstaff at Page High School in Franklin, Tenn.  
**Personal:** Jason is a communication arts major.

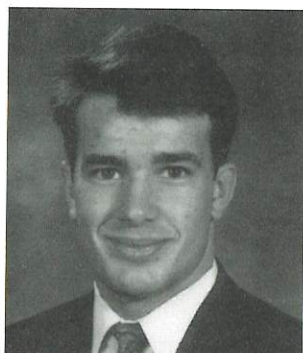


**#44 Josh Frerman**  
6'5" 185 lb.  
Freshman Guard  
Foley, Alabama

**Josh was consistently one of the top high school scorers in the Mobile area.** Josh earned many honors including: First team All-Baldwin County, All-County Academic, and the Bedsole Scholarship. Look for Josh to contribute as an offensive threat this year.

**High School:** Josh played his high school basketball for Spring Hill Hall-of-Famer Mark Thompson at Foley High School in Foley, Ala.

**Personal:** Josh is the son of Jim and Barbara Frerman and is undecided about his major.

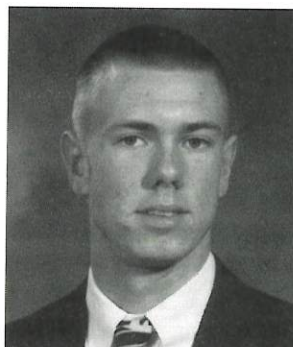


**#55 Jeff Dickman**  
6'5" 210 lb.  
Freshman Forward  
Mobile, Alabama

**Jeff is an outstanding student-athlete who was named to both the all-county** basketball and academic teams. He averaged 15 ppg and 9 rpg last year and will be counted on for his inside scoring this year.

**High School:** Jeff played for Coach Bill Ryan at Davidson High School in Mobile, Ala.

**Personal:** Jeff is the son of Stephen and Marianne Dickman and is majoring in science.

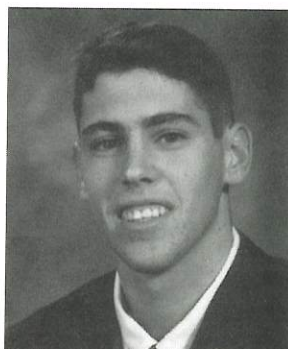


**#40 Mike Schweitzer**  
6'5" 185 lb.  
Freshman Forward  
Jupiter, Florida

**Mike is an all-around athlete who received all-county honors as a wide receiver** on his high school football team. He also led his basketball team to a 27-6 record and a district title. Mike will add valuable depth to the Badger back court this season.

**High School:** Mike played for Coach Hugh Friday at Jupiter High School in Jupiter, Fla.

**Personal:** Mike is the son of Jeff and Linda Schweitzer and his major is undecided.



**#50 Al Cueto**  
6'6" 215 lb.  
Freshman Center  
Miami, Florida

**This Miami native led his high school team in both scoring and rebounding** his senior year. Red-shirted last year, Al's game and strength have both improved greatly. Al will be a valuable back up for the Badgers.

**High School:** Al played high school basketball for Coach Jorge Martinez at Belen Jesuit.

**Personal:** The son of Al and Blanche Cueto, Al is majoring in business.



# 1993-94 Final Game Statistics

Game-by-Game Results/Records 22-10 Overall/13-3 GCAC  
 GCAC Champions NAIA National Tournament

Opponent	Result	Leading Scorer	Leading Rebounder
Faulkner University	W 95-72	Marc Allen (19)	Steve Sterling (7)
Loyola University	W 90-64	Marc Allen (16)	Eric Lovett (10)
Selma University	W 76-65	Bobby Parker (23)	Ronald Gomez (15)
U. of Montevallo	L 67-70	Ronald Gomez (20)	Marc Allen (4)
U. of West Florida	L 79-91	Ronald Gomez (26)	Ronald Gomez (12)
Faulkner University	L 66-67	Ronald Gomez (16)	Bobby Parker (9)
U. of Montevallo	L 56-70	Ronald Gomez (11)	Ronald Gomez (9)
Auburn University Montgomery	L 85-87	Marc Allen (19)	Ronald Gomez (10)
Loyola University	W 85-59	Marc Allen (17)	Eric Lovett (9)
A.U.M.	W 77-61	Ronald Gomez (19)	Sam Coates (7)
Selma University	W 77-63	Marc Allen (20)	Marc Allen (10)
U. of West Florida	W 88-63	Bobby Parker (37)	Eddie Timmons (9)
Alabama State University	L 66-70	Gomez, Parker (14)	Eddie Timmons (7)
Dillard University	W 83-65	Steve Sterling (22)	Marc Allen (14)
Belhaven	W 81-60	Marc Allen (20)	Ronald Gomez (9)
William Carey	W 75-57	Marc Allen (19)	Marc Allen (13)
Southern U. of New Orleans	W 91-77	Marc Allen (21)	Ronald Gomez (7)
Louisiana College	W 63-55	Eric Lovett (16)	Marc Allen (9)
Tougaloo College	W 81-67	Marc Allen (23)	Marc Allen (10)
U. of Mobile	L 65-69	Ronald Gomez (18)	Ronald Gomez (5)
Xavier University	L 65-71	Bobby Parker (20)	Lovett, Parker (8)
Louisiana College	W 75-70	Marc Allen (22)	Marc Allen (13)
Xavier University	W 63-57	Marc Allen (18)	Marc Allen (11)
Dillard University	W 75-69	Eric Lovett (19)	Eddie Timmons (9)
Belhaven	W 68-63	Ronald Gomez (25)	Gomez, Timmons (11)
S.U.N.O.	W 87-61	Allen, Gomez (19)	Ronald Gomez (8)
Tougaloo	W 72-68	Eddie Timmons (18)	Marc Allen (11)
William Carey	W 78-60	Ronald Gomez (20)	Ronald Gomez (7)
U. of Mobile	L 64-68	Eric Lovett (17)	Marc Allen (8)
<b>District 30 Playoffs</b>			
Xavier University	W 75-67	Marc Allen (19)	Ronald Gomez (9)
U. of Mobile	W 83-67	Steve Sterling (21)	Marc Allen (12)
<b>NAIA National Tournament</b>			
Pfeiffer College	L 69-78	Marc Allen (19)	Eddie Timmons (9)

PETER G. HARRISON  
 A.K.A. "Pete"

4610 Springhill Ave.  
 Mobile, AL 36608  
 205-344-8286



Open before lunch, private party rooms  
 steaks, burgers & other good stuff.



REALTORS®



SUE McLEAN  
 Associate Broker

Res. Phone: 205-342-5599

Airport Square:  
 6576 Airport Boulevard  
 Mobile, Alabama 36608  
 Ofc. Phone 205-343-2900  
 1-800-844-2901  
 Fax 205-344-0814

Member Million Dollar Club

# Badger 1993-94 Season Recap

PLAYERS	TOT	TOT	TOT		3PT	3PT	3PT		FT			REB					PTS	AVG	
	GP	FGM	FGA	PCT	FGM	FGA	PCT	FTM	FTA	PCT	REB	AVG	AS	TO	BS	ST			
B. Parker	32	144	282	51.1	50	134	37.3	57	92	62.0	93	2.9	85	85	4	49	395	12.3	
S. Sterling	32	71	180	39.4	42	113	37.2	70	88	79.5	65	2.0	65	51	1	26	254	7.9	
C. Frazier	25	24	59	40.7	10	33	30.3	23	33	69.7	30	1.2	21	18	3	6	81	3.2	
E. Lovett	32	104	210	49.5	4	22	18.2	98	158	62.0	120	3.8	82	74	13	57	310	9.7	
D. Tyson	27	32	52	61.5	0	0	0.0	30	56	53.6	52	1.9	17	15	0	9	94	3.5	
M. Hubbard	4	6	22	27.3	2	10	20.0	3	4	75.0	7	1.8	3	9	1	5	17	4.3	
M. Allen	32	174	263	66.2	3	5	60.0	112	165	67.9	215	6.7	27	59	8	33	463	14.5	
J. Roberts	11	13	30	43.3	6	14	42.9	6	6	100.0	19	1.7	5	8	0	2	38	3.5	
E. Timmons	26	75	147	51.0	1	2	50.0	34	64	53.1	139	5.3	31	24	7	18	185	7.1	
K. Andrews	10	4	7	57.1	0	1	0.0	1	3	33.3	7	0.7	1	5	0	1	9	0.9	
S. Coats	24	23	37	62.2	0	2	0.0	25	36	69.4	31	1.3	11	12	2	5	71	3.0	
R. Gomez	32	207	419	49.4	0	5	0.0	78	144	54.2	212	6.6	77	102	14	50	492	15.4	
C. Graefe	13	4	10	40.0	1	2	50.0	2	5	40.0	7	0.5	2	3	0	0	11	0.8	
<b>TEAM TOTALS</b>																			
Spring Hill	32	881	1,718	51.3	119	343	34.7	539	854	63.1	1,051	32.8	427	447	53	261	2,420	75.6	
Opponents	32	741	1,703	43.5	155	517	30.0	515	806	63.9	901	28.2	359	450	63	205	2,152	67.3	

## 1994-95 Badger Basketball Schedule

Date	Opponent	Site	Time
<b>October</b>			
Sat. 29	Concordia College (Selma)	Home	7:30
<b>November</b>			
Thurs. 10	Auburn U. at Montgomery	Away	7:30
Mon. 14	Loyola U. of New Orleans	Home	7:30
Wed. 16	Concordia College	Away	7:30
Sat. 19	University of Montevallo	Home	7:30
Mon. 22	Faulkner University	Home	7:30
Fri. 25	Selma University	Home	7:30
<b>December</b>			
Thurs. 1	St. Mary's, Texas	Home	7:30
Mon. 12	Auburn U. of Montgomery	Home	7:30
Fri. 16	Faulkner University	Away	7:00
<b>January</b>			
Sat. 7	University of Montevallo	Away	7:00
Thurs. 12	William Carey	Home	7:30
Sat. 14	Tougaloo College	Away	7:30
Mon. 16	Loyola U. of New Orleans	Away	7:30
Thurs. 19	S.U.N.O.	Home	7:30
Sat. 21	Louisiana College	Away	5:45
Mon. 23	Xavier University	Home	7:30
Wed. 25	Dillard University	Away	5:30
Fri. 27	University of Mobile	Away	7:30

Date	Opponent	Site	Time
<b>February</b>			
Thurs. 2	Belhaven College	Home	7:30
Sat. 4	William Carey College	Away	5:30
Mon. 6	Dillard University	Home	5:30
Fri. 10	Tougaloo College	Home	7:30
Sat. 11	Louisiana College	Home	5:30
Thurs. 16	Belhaven College	Away	7:30
Sat. 18	S.U.N.O.	Away	7:30
Mon. 20	Xavier University	Away	7:30
Sat. 25	University of Mobile	Home	7:30
<b>March</b>			
2-4	GCAC Tournament	Mobile, Ala.	
15-20	NAIA National Tournament	Tulsa, Okla.	

# Badger Records



## Individual

### Game

Points	49	Bill Hajeski vs Troy State 2-5-68
Field Goals Made	21	Kevin Ollis vs Dillard 1979-80
Free Throws Made	23	Bill Hajeski vs Troy State 2-5-68
Rebounds	24	Mark Pinkowski vs U.S.A. 1-20-72
Assists	16	Chris Nelson vs Heritage 11-9-84
3-Pt. Field Goals Made	9	Bobby Parker vs. U.W.F. 12-15-93
3-Pt. Field Goals Atmpt.	12	Bobby Parker vs U.W.F. 12-15-93
Steals	7	Eric Lovett vs S.U.N.O. 1-15-94

### Season

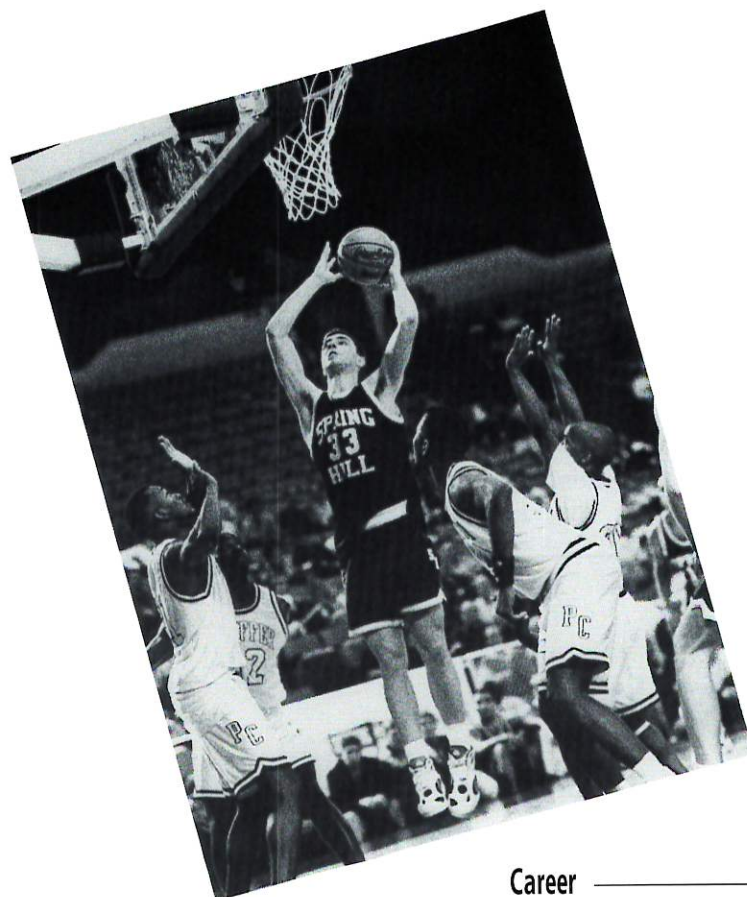
Points	714	Kevin Ollis 1979-80
Points Average	26.5	Happy Mahfouz 1954-55
Free Throws Made	214	Happy Mahfouz 1954-55
Field Goals Attempted	661	Kevin Ollis 1979-80
Field Goals Made	321	Kevin Ollis 1979-80
Best Field Goal Percentage	66.2	Marc Allen - 32 Games
Best Free Throw Percentage	82.8	Darin Tang 1985-86
Rebounds	356	Happy Mahfouz 1954-55
Assists	279	Chris Nelson 1987-88
3-Pt. Field Goals Made	65	Mike McKinley 1989-90
3-Pt. Field Goals Attempted	136	Mike McKinley 1989-90
3 Point Field Goal Percentage	47.8	Mike McKinley 1989-90
Steals	96	P.J. Thelen 1991-92

### Career

Points	2337	Chris Williams 1984-88
Average (50+)	18.7	Kevin Ollis 1979-81 (56 games/1,049 points)
Average (75+)	17.6	Chris Williams 1985-88 (134 games/2,337 points)
Games Played	146	Chris Nelson 1984-88, Darin Tang 1984-88
Field Goals Made	897	Chris Williams 1984-88
Free Throws Made	536	Happy Mahfouz 1952-55
Rebounds	1,266	Happy Mahfouz 1952-55
Assists	836	Chris Nelson 1984-88
3 Point Field Goals Made	175	Mike McKinley 1986-90
3 Point Field Goals Attempted	404	Mike McKinley 1986-90
3 Point Field Goal Percentage	43.3	Mike McKinley 1986-90

### Elite "15" Point Club

1. Chris Williams	84-88	2,337	9. Michael Baker	63-68	1,446
2. Mike McKinley	86-90	2,089	10. Jules Mugnier	48-52	1,355
3. Darin Tang	84-88	1,901	10. Ronald Gomez	91-94	1,355
4. Joe Grill	68-71	1,775	12. Mark Czerniak	67-71	1,345
5. Happy Mahfouz	51-55	1,754	13. P.J. Thelen	89-93	1,325
6. James Rebarchak	73-77	1,753	14. Chris Nelson	84-88	1,307
7. Bill Hajeski	63-68	1,630	15. Mark Thompson	69-73	1,279
8. John Jerkins	88-91	1,581			



# Team

## Game

Most Points	136	vs S.E. Baptist	11-1-84
Most Field Goals Made	61	vs S.E. Baptist	11-1-84
Best Field Goal Percentage	.750	vs S.U.N.O.	1-15-94
Most Free Throws Made	27	vs Troy State	1968
Most Free Throws Attempted	36	vs Phillips College	2-22-85
Best Free Throw Percentage (25+ attempts)	88.3	vs Troy State 22-25	2-18-85
Most Rebounds	66	vs Loyola	11-9-90
Largest Margin of Victory	75	vs Heritage College	11-9-84



## Season

Most Wins	27	1987-88
Most Points	3,256	1987-88
Most Field Goals Made	1,244	1987-88
Best Field Goal Percentage	56	1987-88
Most Free Throws	686	1987-88
Best Free Throw Percentage	73.9	1986-87
Most Rebounds	1,353	1984-85
Best Rebound Average	40.1	1984-85
Most Steals	331	1991-92

## Past Records

93-94 (22-10)	GCAC (13-3)	GCAC Champs, NAIA National	70-71 (9-17)
92-93 (22-9)	GCAC (13-3)	Dist. 30 Champs, NAIA National	69-70 (9-16)
91-92 (24-11)	GCAC (10-6)	Dist. 30 Champs, NAIA National/2nd round	68-69 (10-15)
90-91 (17-12)	GCAC (6-10)		67-68 (13-15)
89-90 (17-15)	GCAC (8-8)	Dist. 30 Playoffs	66-67 (8-13)
88-89 (18-14)	GCAC (9-7)	Dist. 30 Playoffs	65-66 (11-12)
87-88 (27-13)	GCAC (12-4)	Dist. 30 Playoffs	64-65 (9-13)
86-87 (21-13)	GCAC (9-7)	Dist. 30 Playoffs	63-64 (11-14)
85-86 (15-23)	GCAC (2-10)		62-63 (8-13)
84-85 (20-18)	GCAC (4-6)	Dist. 30 Playoffs	61-62 (4-19)
83-84 (4-20)	GCAC (1-11)		60-61 (8-15)
82-83 (5-16)	GCAC (2-10)		59-60 (1-20)
81-82 (1-25)	GCAC (0-12)		58-59 (9-15)
80-81 (3-22)	SCC (0-14)		57-58 (11-10)
79-80 (8-23)	SCC (4-10)		56-57 (11-10)
78-79 (7-18)	SCC (7-11)		55-56 (9-13)
77-78 (12-15)	SCC (8-10)		54-55 (11-12)
76-77 (18-11)	SSC N/A		53-54 (16-10)
75-76 (13-14)	SSC (5-9)		52-53 (11-17)
74-75 (20-7)	SSC (12-2)	Southern State Conf. Champs	51-52 (14-12)
73-74 (14-11)	SSC (8-4)		50-51 (19-8)
72-73 (6-19)			49-50 (15-12)
71-72 (10-12)			48-49 (11-14)
			47-48 (13-15)
			46-47 (13-16)

## Coaching Record

Joe Niland	1993-1994	22-10	.687
Carl Nash	1988-1993	89-55	.618
Drayton Miller	1984-1988	92-73	.557
Sam Ionna	1979-1984	21-106	.165
Frank Kerns	1972-1979	90-95	.486
Jerry Hughes	1968-1972	38-60	.388
Kevin Trower	1966-1968	21-28	.429
Ed Sparling	1964-1966	20-25	.444
Glenn Murphy	1960-1964	31-61	.337
Bill Gardiner	1946-1960	164-184	.471

# 1994-95 Men's Opponents



## **Auburn University at Montgomery Montgomery, Ala.**

**Thursday, Nov. 10, 7:30 p.m. A.U.M**

**Monday, Dec. 12, 7:30 p.m.**

Conference: Southern States, NAIA  
Enrollment: 5,600  
Home Court: A.U.M. Physical Education  
Complex (4,000)  
Nickname: Senators  
Colors: Orange/Brown  
Head Coach: Larry Chapman  
Office: (205) 244-3542  
1993-94 Record: 20-12

## **Belhaven College**

**Jackson, Miss.**

**Thursday, Feb. 2, 7:30 p.m.**

**Thursday, Feb. 16, 7:30 p.m. Belhaven**

Conference: GCAC, NAIA  
Enrollment: 1,000  
Home Court: Heidelberg (1,000)  
Nickname: Blazers  
Colors: Green/Gold  
Head Coach: Jason Conner  
Office: (601) 968-5936  
1993-94 Record: 15-17

## **Concordia College**

**Selma, Ala.**

**Saturday, Oct. 29, 7:30 p.m.**

**Wednesday, Nov. 16, 7:30 p.m. Concordia**

Conference: Independant  
Enrollment: 385  
Home Court: Lehman Center (1,000)  
Nickname: Hornets  
Colors: Green/Gold  
Head Coach: Moses Nerilab  
Office: (205) 874-5700

## **Dillard University**

**New Orleans, La.**

**Wednesday, Jan. 25, 5:30 p.m. Dillard**

**Monday, Feb. 6, 5:30 p.m.**

Conference: GCAC, NAIA  
Enrollment: 1,700  
Home Court: Dent Hall (3,500)  
Nickname: Blue Devils  
Colors: Blue/White  
Head Coach: Jerry W. Llyod  
Office: (504) 286-4753  
1993-94 Record: 15-17

## **Faulkner University Montgomery, Ala.**

**Monday, Nov. 22, 7:30 p.m.**

**Friday, Dec. 16, 7 p.m. Faulkner**

Conference: Southern States, NAIA  
Enrollment: 750  
Home Court: Tine Davis Gym (2,500)  
Nickname: Eagles  
Colors: Blue/Grey/White  
Head Coach: Jim Sanderson  
Office: (205) 272-5820  
1993-94 Record: 14-17

## **Louisiana College**

**Pineville, La.**

**Saturday, Jan. 21, 5:30 p.m. Louisiana College**

**Saturday, Feb. 11, 7:30 p.m.**

Conference: GCAC, NAIA  
Enrollment: 1,100  
Home Court: H.O. West (4,500)  
Nickname: Wildcats  
Colors: Royal Blue/Orange  
Head Coach: Gene Rushing  
Office: (318) 487-7322  
1993-94 Record: 9-16

## **Loyola U. of New Orleans**

**New Orleans, La.**

**Monday, Nov. 14, 7:30 p.m.**

**Monday, Jan. 16, 7:30 p.m. Loyola**

Conference: NAIA Div. 2,  
Enrollment: 3,000  
Home Court: Loyola Recreation Sports  
Complex (500)  
Nickname: Wolf Pack  
Colors: Maroon/Gold  
Head Coach: Jerry Hernandez  
Office: (504) 865-3137  
1993-94 Record: 10-15

## **University of Mobile**

**Mobile, Ala.**

**Friday, Jan. 27, 7:30 p.m. UM**

**Saturday, Feb. 25, 7:30 p.m.**

Conference: GCAC, NAIA  
Enrollment: 1,660  
Home Court: H. Austill Pharr (1,500)  
Nickname: Rams  
Colors: Maroon/White  
Head Coach: Dr. Bill Elder  
Office: (205) 675-5990  
1993-94 Record: 32-3

**University of Montevallo****Montevallo, Ala.****Saturday, Nov. 19, 7:30 p.m.****Saturday, Jan. 7, 7 p.m. Montevallo**

Conference: Southern States, NAIA  
 Enrollment: 3,200  
 Home Court: Myrick Hall (2,000)  
 Nickname: Falcons  
 Colors: Purple/Gold  
 Head Coach: Rob Spivery  
 Office: (205) 665-6593  
 1993-94 Record: 21-12

**William Carey College****Hattiesburg, Miss.****Thursday, Jan. 12, 7:30 p.m.****Saturday, Feb. 4, 5:30 p.m. William Carey**

Conference: GCAC, NAIA  
 Enrollment: 2,200  
 Home Court: Clinton Gymnasium  
 Nickname: Crusaders  
 Colors: Red/Black/White  
 Head Coach: Steve Knight  
 Office: (601) 582-6111  
 1993-94 Record: 17-16

**St. Mary's University****San Antonio, Texas****Thursday, Dec. 1, 7:30 p.m.**

Conference: Heart of Texas, NAIA  
 Enrollment: 4,129  
 Home Court: Alumni Gym (1,500)  
 Nickname: Rattlers  
 Colors: Blue/Gold  
 Head Coach: Buddy Myers  
 Office: (210) 436-3528  
 1993-94 Record: 21-10

**Xavier University****New Orleans, La.****Monday, Jan. 23, 7:30 p.m.****Monday, Feb. 20, 7:30 p.m. Xavier**

Conference: GCAC, NAIA  
 Enrollment: 3,391  
 Home Court: The Barn (1,200)  
 Nickname: Gold Rush  
 Colors: Gold/White  
 Head Coach: Dale Valdery  
 Office: (504) 483-7329  
 1993-94 Record: 21-10

**Selma University****Selma, Ala.****Wednesday, Nov. 2, 7:30 p.m.****Friday, Nov. 25, 7:30 p.m. Selma**

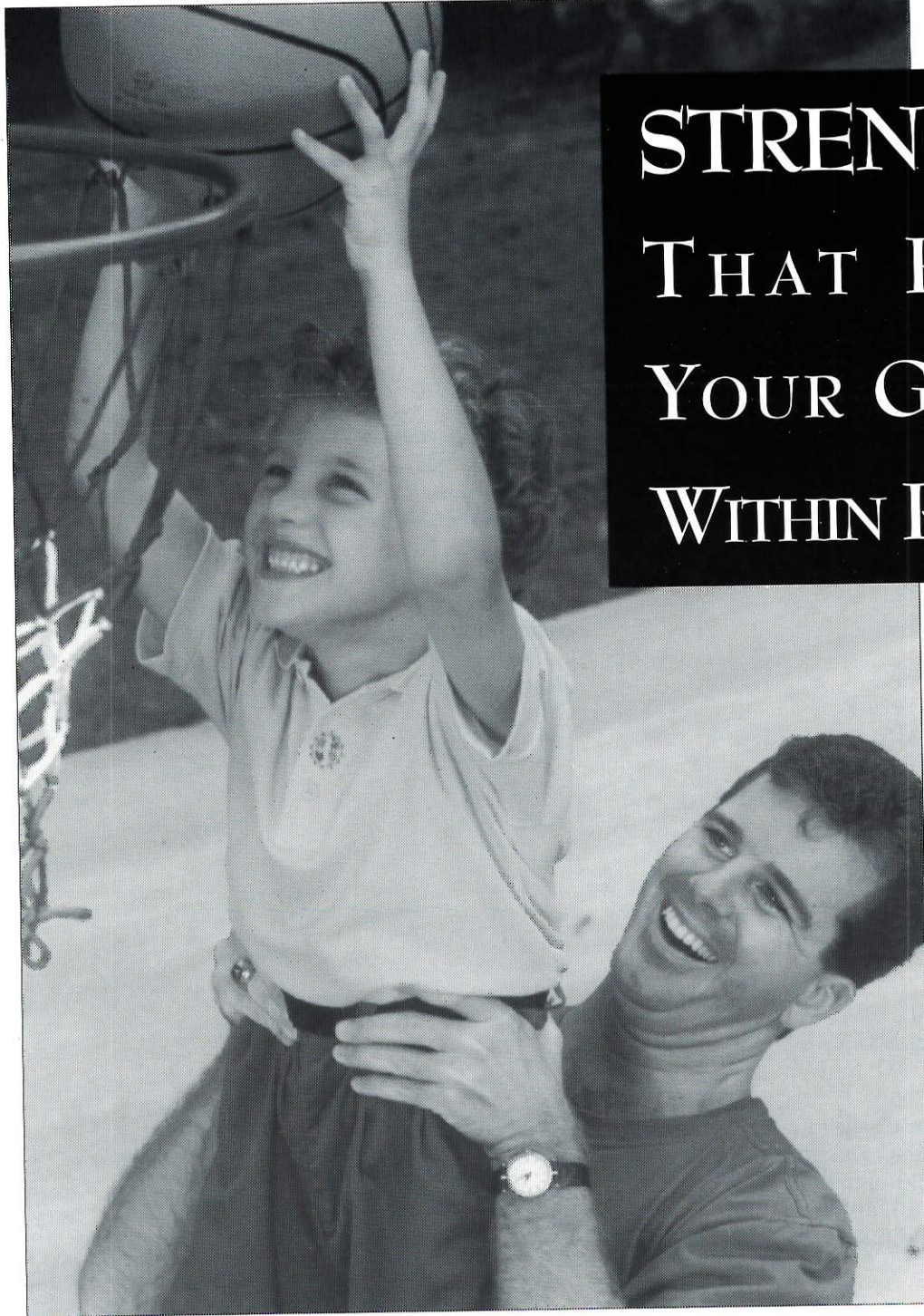
Conference: NAIA  
 Enrollment: 350  
 Home Court: Jemison-Owens Gym  
 Nickname: Bulldogs  
 Colors: Royal Blue/White  
 Head Coach: Raymond C. Brown  
 Office: (205) 872-9745

**Southern University of New Orleans****New Orleans, La.****Thursday, Jan. 19, 5:30 p.m.****Saturday, Feb. 18, 7:30 p.m. S.U.N.O.**

Conference: GCAC, NAIA  
 Enrollment: 5,000  
 Home Court: The Castle (1,800)  
 Nickname: SUNO Knights  
 Colors: Columbia Blue/Gold  
 Head Coach: Earl Hill  
 Office: (504) 286-5195  
 1993-94 Record: 12-15

**Tougaloo College****Tougaloo, Miss.****Saturday, Jan. 14, 7:30 p.m. Tougaloo****Friday, Feb. 10, 7:30 p.m.**

Conference: GCAC, NAIA  
 Enrollment: 1,131  
 Home Court: Norwest Jr. High  
 Nickname: Bulldogs  
 Colors: Royal Blue/Scarlet  
 Head Coach: James Turner  
 Office: (601) 977-7809  
 1993-94 Record: 11-21



STRENGTH  
THAT PUTS  
YOUR GOALS  
WITHIN REACH

**First Alabama** Bank<sup>®</sup>

Member FDIC



## 1994-95 Lady Badger Season Outlook

---

The coaching staff welcomes back ten letter-winners from the 1993-94 squad which finished 15-14 overall and 8-8 in the GCAC. Gone from last year's squad are three-time GCAC All-Conference team member **Marsha Richardson** and four-year letter-winner **Brandy Anderson**.

The Lady Badgers will look for leadership from its three returning starters. Juniors **Elaine Derrick** and **Dana Henderson** return after having started all 29 games last season. Sophomore forward **Alison Kahn**, who had an outstanding freshman season (10 ppg and 6 rpg) while playing in the majority of the 29 games.

Filling the center position is a major concern for the coaching staff of the Lady Badgers. Junior **Jamie Poiroux** and sophomore **Ellie Ramey** are possible candidates for the starting role. Both players averaged 6 ppg and 4 rpg while playing in many of the 29 games.

To support the returning starters, the Lady Badgers look very deep with a combination of experienced

veterans and a talented group of freshmen. Sophomores **Deon Kerne**, **Lesa Paille**, **Megan Johnson** and junior **Meg Ekins** all played some last season and will enable the team to maintain solid depth when needed. Newcomers to this year's squad include 6'1" **Donmeka Martin**, 5'10" **Kathy Walsh**, 5'9" **Alice Turni** and 5'9" **Alison Mougey**.

A key loss for the Lady Badgers is **Molly Layton** who suffered a knee injury in pre-season drills.

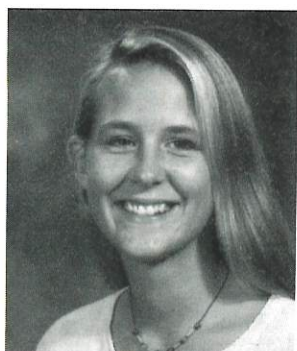
The Lady Badgers will be striving to make a second consecutive GCAC playoff appearance. "The league will be tough from top to bottom," says Coach Walker. In addition to the 16-game conference slate, SHC will play Talladega College, Judson College, Covenant College, Concordia College of Selma, University of West Florida, Auburn University at Montgomery, Union University, Freed-Hardeman University and David Lipscomb University (in the Bison Classic).

*Spring Hill College*  
*94 Badgers*



**1994-95 Lady Badger Basketball Team**

#	Player	Height	Class	Position	Hometown
4	Deon Kerne	5'6"	SO	G	Metairie, La.
10	Molly Layton	5'6"	SR	G	Chalmette, La.
11	Dana Henderson	5'1"	JR	G	Axis, Ala.
12	Alice Turni	5'9"	FR	G/F	Chalmette, Ala.
20	Lesa Paille	5'7"	JR	G	Covington, La.
22	Megan Johnson	5'6"	SO	G	Louisville, Ky.
24	Margaret Ekins	5'3"	SO	G	Batesville, Ind.
30	Alison Kahn	5'11"	SO	F	Kenner, La.
32	Elaine Derrick	5'8"	JR	G	Nashville, Tenn.
34	Eloise Ramey	6'0"	SO	C	St. Louis, Mo.
35	Jamie Poiroux	5'11"	JR	C	Grand Bay, Ala.
40	Donmeka Martin	6'1"	FR	F/C	Jackson, Tenn.
41	Kathleen Walsh	5'10"	FR	F	Jacksonville, Fla.
45	Alison Mougey	5'9"	FR	G/F	Pensacola, Fla.



**#22 Megan Johnson**  
5'6" Sophomore Guard  
Louisville, Kentucky

**Megan played in nine games last season and will add to our depth in the back court.** She could be a great outside shooter if she continues to work hard and gain confidence.

**High School:** Megan played for Coach Val Bol at Atherton High School in Louisville, Ky.

**Personal:** Megan was a member of the GCAC All-Academic team.



**#32 Elaine Derrick**  
5'8" Junior Guard  
Nashville, Tennessee

**Elaine started all 29 games last season. She led the team in free throw percentage** (76 percent). Elaine had a career high of 25 points against Belhaven College. She is a tremendous athlete, and she will be looked upon to be our defensive stopper.

**High School:** Elaine played for Coach Jinx Cockerham at Father Ryan High School in Nashville, Tenn.

**Personal:** Elaine is a member of the SHC cross country team and is majoring in business.

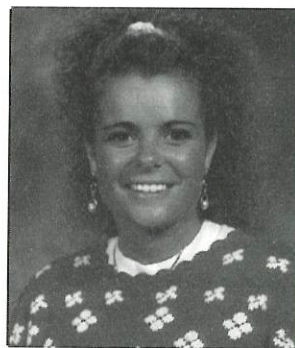


**#40 Donmeka Martin**  
6'1" Freshman  
Forward/Center  
Jackson, Tennessee

**Donmeka earned All-League honors her senior season averaging 12 ppg and 8 rpg.** She should be able to contribute to the Lady Badgers immediately. Donmeka is a great athlete who in time can become a great shooter.

**High School:** Donmeka played for Coach T. Willie Tyson at Southside High School in Jackson, Tenn.

**Personal:** Donmeka is majoring in pre-engineering.



**#24 Meg Ekins**  
5'3" Sophomore Guard  
Batesville, Indiana

**Meg played in only 13 games last year due to an ankle injury.** She is expected to push for quality minutes. Meg is an extremely hard worker and is a valuable substitute at the point guard or off-guard position.

**High School:** Meg played for Coach Donna Hoeing at Batesville High School in Indiana.

**Personal:** Meg is also a member of the SHC golf team and is a member of the GCAC All-Academic team. She is majoring in accounting.



**#11 Dana Henderson**  
5'1" Junior Guard  
Axis, Alabama

**Dana is one of three returning starters and will be looked upon to provide experience and leadership.** She has the quickness to become a very good player, but her intensity level will be an important factor this season. Dana had a career 17 points against Judson.

**High School:** Dana played high school basketball for Coach Woody Head at Faith Academy in Mobile.

**Personal:** Dana is majoring in communication arts.

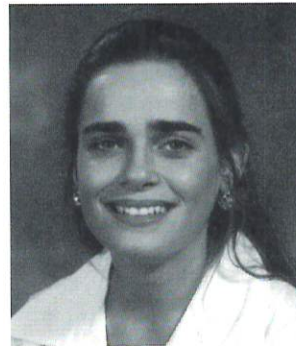


**#10 Molly Layton**  
**5'6" Senior Guard**  
**Chalmette, Louisiana**

**Molly is the lone senior on this year's team and has been a starter since her freshman season.** She scored 18 points in a come-from-behind victory against the University of Mobile. Coach Walker says Molly is one of the smartest players he has ever coached.

**High School:** Molly played for Coach Sherri Retif at Ursuline Academy in New Orleans, La.

**Personal:** Molly is a resident assistant at Spring Hill and majors in mathematics.



**#4 Deon Kerne**  
**5'6" Sophomore Guard**  
**Metairie, Louisiana**

She is our potential starting point guard. Deon played in all 29 games as a freshman and had a career high eight assists against Southern University of New Orleans. Deon is a great playmaker who is smart and understands the game.

**High School:** Deon played for Coach Chuck Dorvin at Ridgewood Preparatory in Metairie, La.

**Personal:** Deon is also a member of the Spring Hill cross country team and is a communication arts major.

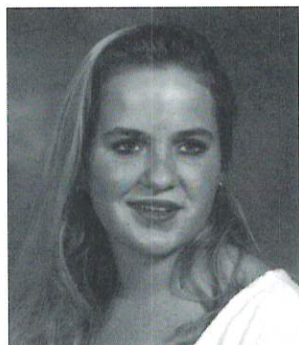


**#20 Lesa Paille**  
**5'6" Sophomore Guard**  
**Covington, Louisiana**

**Lesa played in 11 games last year and will add depth to our back court.** She improved tremendously during her freshman year and is working to improve her overall knowledge of the game.

**High School:** Lesa played for Coach Charles Strohmeyer at St. Scholastica Academy in Covington, La.

**Personal:** Lesa is a member of the cross country team and was also named to the GCAC All-Academic team. She is an elementary education major.



**#45 Alison Mougey**  
**5'9" Freshman**  
**Guard/Forward**  
**Pensacola, Florida**

**Alison averaged 12 ppg and 7 rpg while receiving league honors her senior year** in high school. Alison will enhance our back court with her outside shooting.

**High School:** Alison played for Coach Jim Sessions at Catholic High School in Pensacola, Fla.

**Personal:** Alison is majoring in education.

## Acknowledgements

**The Spring Hill Badger Basketball office would like to thank the entire local media for their support throughout this past basketball season. If there is anything we can do to assist you, please call us at 380-3485.**



**A big thanks to our advertising supporters**

**whose**

**generosity made this basketball guide possible. Also, thanks to Carol Mann and the SHC Office of Public Relations and Publications and John Nicholas and the staff of Artcraft Press, Inc.**





**#34 Ellie Ramey**  
**6'0" Sophomore Center**  
**St. Louis, Missouri**

**Ellie played in all 29 games last season and shot 51 percent from the field.** She had a career high of 20 points and 15 rebounds against Tougaloo College. Ellie has the ability to dominate a game but has been nagged by injuries.

**High School:** Ellie played for Coach Thad Strobach at Visitation Academy in St. Louis, Mo.

**Personal:** Ellie is majoring in education.



**#12 Alice Turni**  
**5'9" Freshman**  
**Guard/Forward**  
**Chalmette, Louisiana**

**Alice was one of the top-rated guards in Louisiana last year.** She was named to the All-Metro and All-State team while averaging 13 ppg and 8 rpg. Alice has the potential to be a good guard in our conference because of her strength and size.

**High School:** Alice played for Coach Jay Ellerbusch at Mount Carmel Academy in New Orleans, La.

**Personal:** Alice is majoring in chemistry



**#30 Alison Kahn**  
**5'11" Sophomore Forward**  
**Kenner, Louisiana**

**Alison started in 25 games and led the team in field goal percentage** (64 percent) her freshman season and scored a career high 23 points against Dillard University. Big things are expected from Alison this year. We will be counting on her offensive and defensive skills.

**High School:** Alison played for Coach Chuck Dorvin at Ridgewood Preparatory in Metairie, La.

**Personal:** Alison was a member of the GCAC All-Academic Team and is majoring in accounting.



**#35 Jamie Poiroux**  
**5'11" Junior Center**  
**Grand Bay, Alabama**

**Jamie started five of the 27 games in which she played last season.** She will compete for the starting center position. She had a career high 16 points and 10 rebounds against Wilmington College. Jamie is a tough and physical player with great potential.

**High School:** Jamie played high school basketball for Coach Woody Head at Faith Academy in Mobile, Ala.

**Personal:** Jamie is majoring in business management.



**#41 Kathy Walsh**  
**5'11" Freshman Forward**  
**Jacksonville, Florida**

**Kathy earned All-League honors in both basketball and track.** She averaged 10 ppg and 6 rpg her senior season. Kathy should make the transition to college easily and give added depth to the front court.

**High School:** Kathy played for Coach Tony Orlando at Bishop Kenny High School in Jacksonville, Fla.

**Personal:** Kathy is majoring in biology.

# 1994-95 Women's Opponents

## **Auburn University at Montgomery Montgomery, Alabama**

**Tuesday, Nov. 22, 5:30 p.m.**

**Monday, Nov. 28, 7 p.m. AUM**

Conference: Southern States, NAIA  
Enrollment: 5,600  
Home Court: PE Complex (4,000)  
Nickname: Lady Senators  
Colors: Orange/Brown/White  
Head Coach: Colby Tilley  
Office: (205) 244-3541  
1993-94 Record: 34-4

## **Belhaven College Jackson, Mississippi**

**Thursday, Feb. 2, 5:30 p.m.**

**Thursday, Feb. 16, 5:30 p.m. Belhaven**

Conference: GCAC, NAIA  
Enrollment: 1,000  
Home Court: Heidelberg (1,000)  
Nickname: Lady Blazers  
Colors: Green/Gold  
Head Coach: Dave Boetler  
Office: (601) 968-5936  
1993-94 Record: 10-18

## **Concordia College Selma, Alabama**

**Saturday, Oct. 29, 5:30 p.m.**

**Wednesday, Nov. 16, 5:30 p.m. Concordia**

Conference: Independant, NAIA  
Enrollment: 2,300  
Home Court: Lehman (400)  
Nickname: Lady Hornets  
Colors: Kelly Green/Gold  
Head Coach: Anthony Robinson  
Office: (205) 874-5700

## **Covenant College Lookout Mountain, Georgia**

**Saturday, Nov. 26, 6 p.m. Covenant**

Conference: TVAC, NAIA II  
Enrollment: 640  
Home Court: Scotland Court (1,500)  
Nickname: Lady Scots  
Colors: Blue/White  
Head Coach: Tami Smialak  
Office: (706) 820-1560  
1993-94 Record: 16-15

## **Dillard University New Orleans, Louisiana**

**Wednesday, Jan. 25, 7:30 p.m. Dillard**

**Monday, Feb. 6, 7:30 p.m.**

Conference: GCAC, NAIA  
Enrollment: 1,700  
Home Court: Dent Hall (3,500)  
Nickname: Devilettes  
Colors: Blue/White  
Head Coach: Mary Teamer  
Office: (504) 286-4753  
1993-94 Record: 21-11

## **Freed-Hardeman College Henderson, Tennessee**

**Friday, Nov. 11, 6 p.m.**

Conference: TCAC, NAIA  
Enrollment: 1,325  
Home Court: Bader Gym (1,600)  
Nickname: Lady Lions  
Colors: Maroon/White/Gold  
Head Coach: Dale Neal  
Office: (901) 989-6000  
1993-94 Record: 9-21

## **Judson College Marion, Alabama**

**Saturday, Jan. 7, 2 p.m. Judson**

**Monday, Jan. 16, 6 p.m.**

Conference: NCCAA  
Enrollment: 1,300  
Home Court: None  
Nickname: Lady Eagles  
Colors: Red/Black/White  
Head Coach: Michelle Voisin  
Office: (205) 683-6161  
1993-94 Record: 15-14

## **Louisiana College Pineville, Louisiana**

**Saturday, Jan. 21, 7:45 p.m. Louisiana College**

**Saturday, Feb. 11, 7:30 p.m.**

Conference: GCAC, NAIA  
Enrollment: 1,100  
Home Court: H.O. West (4,500)  
Nickname: Lady Wildcats  
Colors: Royal Blue/Orange  
Head Coach: Billy Brooks  
Office: (318) 487-7502  
1993-94 Record: 20-7

**University of Mobile****Mobile, Alabama****Friday, Jan. 27, 5:30 p.m. U. of Mobile****Saturday, Feb. 25, 5:45 p.m.**

Conference: GCAC, NAIA  
Enrollment: 1,660  
Home Court: H. Austill Pharr (1,500)  
Nickname: Lady Rams  
Colors: Maroon/White  
Head Coach: Curt Berger  
Office: (205) 675-5990  
1993-94 Record: 15-16

**Selma University****Selma, Alabama****Friday, Nov. 25, 5:30 p.m.**

Conference: NAIA  
Enrollment: 350  
Home Court: Jemison - Owens Gym  
Nickname: Lady Bulldogs  
Colors: Royal Blue/White  
Head Coach: Clyde Fielder  
Office: (205) 872-9745

**Southern University at New Orleans****New Orleans, Louisiana****Thursday, Jan. 19, 5:30 p.m.****Saturday, Feb. 18, 5:30 p.m. S.U.N.O.**

Conference: GCAC, NAIA  
Enrollment: 5,000  
Home Court: The Castle (1,800)  
Nickname: Lady Knights  
Colors: Columbia Blue/Gold  
Head Coach: G. Jean Brooks  
Office: (504) 286-5195  
1993-94 Record: 14-15

**Talledega College****Talledega, Alabama****Tuesday, Nov. 8, 6 p.m.****Friday, Jan. 6, 5:30 p.m. Talledega**

Conference: Southern States, NAIA  
Enrollment: 1,027  
Home Court: Callanan Gymnasium (500)  
Nickname: Lady Tornados  
Colors: Crimson/Columbia Blue  
Office: (205) 761-6239  
Head Coach: Ernest Wynn

**Tougaloo College****Tougaloo, Mississippi****Saturday, Jan. 14, 6 p.m. Tougaloo****Friday, Feb. 10, 5:30 p.m.**

Conference: GCAC, NAIA  
Enrollment: 825  
Home Court: Brownlee (3,000)  
Nickname: Lady Bulldogs  
Colors: Royal Blue/Scarlet  
Head Coach: Andrew Pennington  
Office: (601) 956-4941  
1993-94 Record: 4-28

**Union University****Jackson, Tennessee****Saturday, Nov. 12, 2:30 p.m. Union**

Conference: TCAC, NAIA  
Enrollment: 1,237  
Home Court: Fred DeLay (2,500)  
Nickname: Lady Bulldogs  
Colors: Cardinal/White  
Head Coach: Dr. David Blackstock  
Office: (901) 668-1818  
1993-94 Record: 27-6

**University of West Florida****Pensacola, Florida****Tuesday, Dec. 13, 7 p.m. UWF**

Conference: Gulf States, NAIA  
Enrollment: 8,000  
Home Court: Gym (3,000)  
Nickname: Lady Argonauts  
Colors: Blue/Green  
Head Coach: Megan Henry  
Office: (904) 474-3003

**William Carey College****Hattiesburg, Mississippi****Thursday, Jan. 12, 5:30 p.m.****Saturday, Feb. 4, 7:30 p.m. William Carey**

Conference: GCAC, NAIA  
Enrollment: 2,000  
Home Court: Clinton Gymnasium  
Nickname: Lady Crusaders  
Colors: Red/Black/White  
Head Coach: Tracy English  
Office: (601) 582-6111  
1993-94 Record: 13-17

**Xavier University****New Orleans, Louisiana****Monday, Jan. 23, 5:30 p.m.****Monday, Feb. 20, 5:30 p.m. Xavier**

Conference: GCAC, NAIA  
Enrollment: 2,600  
Home Court: The Barn (2,000)  
Nickname: Gold Nuggets  
Colors: Gold/White  
Head Coach: Janice Joseph  
Office: (504) 486-7411  
1993-94 Record: 28-4



# 1993-94 Final Game Statistics

Game-by-Game Results/Records  
15-14 Overall/8-8 GCAC

Opponent	Result	Leading Scorer	Leading Rebounder
Selma University	W 104-65	M. Richardson (30)	Marsha Richardson (9)
Judson College	W 91-72	M. Richardson (18)	Marsha Richardson (9)
Auburn U. Montgomery	L 73-96	Layton, Derrick(17)	Dana Henderson(6)
U. of West Florida	W 69-60	M. Richardson (16)	Marsha Richardson (10)
U. of Montevallo	L 65-83	M. Richardson (23)	Marsha Richardson (10)
U. of West Florida	W 75-67	Layton, Derrick(15)	Alison Kahn (9)
Judson College	W 77-55	Alison Kahn (18)	Alison Kahn (12)
U. North Georgia	W 60-52	M. Richardson (15)	Marsha Richardson (10)
Gardner-Webb	L 70-73	Layton, Richardson (14)	Marsha Richardson (7)
Selma University	W 85-59	Ellie Ramey (19)	Marsha Richardson (7)
Wilmington College	L 76-87	Ramey, Poiroux (16)	Jamie Poiroux (10)
Auburn U. Montgomery	L 58-84	Kerne, Richardson (14)	Marsha Richardson (4)
Dillard University	L 45-68	Elaine Derrick (11)	Poiroux, Richardson (4)
Belhaven College	W 59-54	Elaine Derrick (25)	Marsha Richardson (7)
William Carey College	L 63-67	M. Richardson (16)	Marsha Richardson (10)
S.U.N.O.	W 87-67	M. Richardson (24)	Marsha Richardson (11)
Louisiana College	L 49-52	Molly Layton (12)	Marsha Richardson (10)
Tougaloo College	W 98-78	Ellie Ramey (20)	Ellie Ramey (15)
U. of Mobile	W 70-67	Layton, Kahn (18)	Alison Kahn (11)
Xavier University	L 39-67	M. Richardson (9)	Ramey, Poiroux (6)
Lousiana College	L 66-83	Alison Kahn (13)	Marsha Richardson (8)
Xavier University	L 45-65	M. Richardson (12)	Kahn, Richardson (4)
Dillard University	W 72-63	Alison Kahn (23)	Marsha Richardson (12)
Belhaven College	L 64-74	M. Richardson (19)	Marsha Richardson (9)
S.U.N.O.	L 64-70	Elaine Derrick (19)	Marsha Richardson (12)
Tougaloo College	W 77-47	Alison Kahn (13)	Alison Kahn (13)
William Carey College	W 70-66	M. Richardson (16)	Marsha Richardson (12)
U. of Mobile	W 46-43	M. Richardson (19)	Marsha Richardson (9)
<b>District 30 Playoffs</b>			
Xavier University	L 45-76	Henderson, Richardson (8)	Marsha Richardson (10)

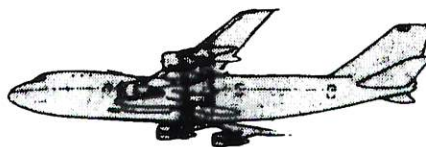
## Springdale Travel

e-1 springdale mall • 3250 airport blvd. • mobile, alabama 36606 • 205-476-5095

THE LARGEST VOLUME  
AGENCY IN MOBILE  
NO CHARGE FOR OUR SERVICES

**476-5095**

MON.-FRI. 8 AM - 7 PM SAT. 9 AM - 5PM



### AIRLINE TICKETS

SAME PRICES AS THE AIRPORT  
FREE DELIVERY OF TICKETS - CITY WIDE  
REPRESENTING: ALL AIRLINES, CRUISE & TOUR COMPANIES  
HOTELS, AMTRAK - WORLDWIDE  
• BUSINESS TRAVEL • GROUP RATES • HONEYMOON  
• AMERICAN EXPRESS TRAVELERS CHECKS





# Lady Badger 1993-94 Season Recap

PLAYERS	TOT	TOT	TOT		3PT	3PT	3PT	FT			REB			PTS	AVG			
	GP	FGM	FGA	PCT	FGM	FGA	PCT	FTM	FTA	PCT	REB	AS	TO			BS	ST	
D. Kerne	29	48	159	30.2	15	60	25.0	36	62	58.1	74	2.6	52	73	2	50	147	5.1
M. Layton	29	82	265	30.9	34	115	29.6	41	55	74.5	94	3.2	77	87	5	52	239	8.2
D. Henderson	29	76	241	31.5	11	45	24.4	46	78	59.0	105	3.6	64	100	2	61	209	7.2
B. Anderson	27	15	41	36.6	0	0	0.0	9	14	64.3	53	2.0	8	18	0	15	39	1.4
L. Paille	11	2	16	12.5	1	4	25.0	1	2	50.0	10	0.9	4	4	0	2	6	0.5
M. Johnson	9	2	13	15.4	0	6	0.0	0	2	0.0	3	0.3	0	5	0	1	4	0.4
M. Ekins	13	1	9	11.1	1	3	33.3	2	3	66.7	5	0.4	4	16	0	3	5	0.4
A. Kahn	29	116	181	64.1	0	0	0.0	56	89	62.9	177	6.1	47	78	11	49	288	9.9
E. Derrick	29	114	273	41.8	12	48	25.0	59	78	75.6	65	2.2	69	83	5	49	299	10.3
E. Ramey	29	69	134	51.5	0	0	0.0	35	56	62.5	117	4.0	12	41	26	16	173	6.0
J. Poiroux	27	53	113	46.9	0	0	0.0	60	88	68.2	96	3.6	19	52	1	26	166	6.1
M. Richardson	28	168	363	46.3	7	20	35.0	44	81	54.3	219	7.8	41	71	21	69	387	13.8
<b>TEAM TOTALS</b>																		
Spring Hill	29	746	1,808	41.3	81	301	26.9	389	608	64.0	1,066	36.8	397	630	73	393	1,962	67.7
Opponents	29	721	1,712	42.1	87	282	30.9	431	718	60.0	1,126	38.8	357	650	49	392	1,960	67.6

## 1994-95 Lady Badger Basketball Schedule

Date	Opponent	Site	Time	Date	Opponent	Site	Time
<b>October</b>				<b>February</b>			
Sat. 29	Concordia College	Home	5:30	Thurs. 2	Belhaven College	Home	5:30
<b>November</b>				Sat. 4	William Carey College	Away	7:30
Tues. 8	Talladega College	Home	6:00	Mon. 6	Dillard University	Home	7:30
Fri. 11	Freed-Hardeman University	Away	6:00	Fri. 10	Tougaloo College	Home	5:30
Sat. 12	Union University	Away	2:30	Sat. 11	Louisiana College	Home	7:30
Wed. 16	Concordia College	Away	5:30	Thurs. 16	Belhaven College	Away	5:30
Tues. 22	Auburn U. at Montgomery	Home	5:30	Sat. 18	S.U.N.O.	Away	5:30
Fri. 25	Selma University	Home	5:30	Mon. 20	Xavier University	Away	5:30
Sat. 26	Covenant College	Away	6:00	Sat. 25	University of Mobile	Home	5:45
Mon. 28	Auburn U. at Montgomery	Away	7:00	<b>March</b>			
<b>December</b>				Wed. 1	GCAC Quarterfinals	TBA	TBA
Fri. 2	Lady Bison Classic	Away	TBA	Mon. 6	GCAC Semifinals	TBA	TBA
Sat. 3	Lady Bison Classic	Away	TBA	Wed. 8	GCAC Championship	TBA	TBA
Tues. 13	U. of West Florida	Away	7:00	15-21	NAIA National Tournament	Jackson, Tenn.	
<b>January</b>							
Fri. 6	Talladega College	Away	5:30				
Sat. 7	Judson College	Away	2:00				
Thurs. 12	William Carey College	Home	5:30				
Sat. 14	Tougaloo College	Away	6:00				
Mon. 16	Judson College	Home	6:00				
Thurs. 19	S.U.N.O.	Home	5:30				
Sat. 21	Louisiana College	Away	7:45				
Mon. 23	Xavier University	Home	5:30				
Wed. 25	Dillard University	Away	7:30				
Fri. 27	University of Mobile	Away	5:30				



## 1994-95 Badger Cheerleaders

Name	Class	Hometown	Name	Class	Hometown
Stephanie Boteler	FR	Gretna, La.	Kimberlyn Robinson	FR	Mobile, Ala.
Jacqueline Brennan	JR	Salem, S.C.	Kimberly Vaughn (Captain)	JR	New Orleans, La.
Pepper Cayer	FR	Monroe, La.	Tamu Wilson (Co-Captain)	JR	Mobile, Ala.
Melissa Chuilli	SO	Metairie, La.			
Rebecca Cox	SO	Mobile, Ala.	<b>Sponsor:</b>		
Janelle Dickinson	FR	Mobile, Ala.	Lorian Murdock		
Karma Farrier	JR	Eight Mile, Ala.	<b>Student Assistant:</b>		
Karla Mitchell	FR	Prichard, Ala.	Penny Schuessler	JR	Wayne, Pa.
Nancy Perez	SO	Metairie, La.			

### DENNIS LANGAN CONSTRUCTION & REMODELING, INC.

Insured • Licensed • Bonded

Office (205) 661-8881  
Voice Pager (205) 460-5770

P.O. Box 91536  
Mobile, AL 36691-1536

DENNIS LANGAN

**Marriott  
Backs The  
BADGERS**



Spring Hill College

**Marriott** corporation  
Educational Food Services

Visit  
us in the  
Cafe  
Cloister  
and  
Golf Shop



**Pizza Hut®**



*supports*

Spring Hill College  
***Basketball***



**Hoop It Up At...**

**HOOTERS™**



**WINGS, CLAMS,  
SHRIMP,  
OYSTER  
ROASTS &  
fun, fun, fun  
'til your daddy  
takes your slam  
dunk away!!!**

**BACK THE BADGERS!**

Join the  
Spring Hill College Athletics Club

# THE HOLE

2618 Old Shell Road

Private Club • Members & Guest Welcome

Valid I.D. **REQUIRED**



It Takes More Than Equipment To Be A Winner.

It takes determination and a desire to be the best. We know, because these qualities, not just our equipment, have made us the cellular choice of thousands. At Contel Cellular, we support good sports programs. Because good sports programs instill determination and a desire to be the best. And those are qualities needed not only throughout the season, but throughout life.

**CONTEL CELLULAR**

**The One Real Difference.**

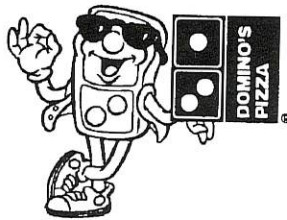
Contel Cellular, 1201 Montlimar Drive, Suite 625, Mobile, AL 36609, 344-2414

For A Real  
Crowd Pleaser...

GOTTA  
BE  
GOOD

GOTTA  
BE  
NOW

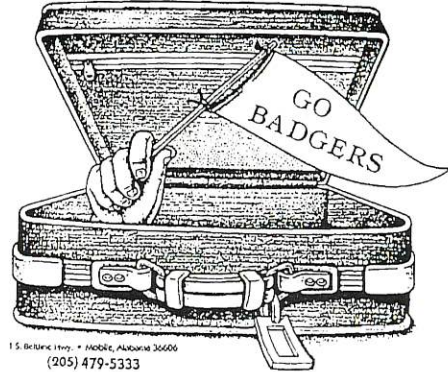
GOTTA  
BE  
DOMINO'S



SERVING THE CAMPUS  
AREA.  
5624 Old Shell Rd.  
460-0852

Large  
Pepperoni Pizza  
-Delivered-  
\$5.99  
Plus Tax

Home Or Away,  
A Great Place To Stay.



15. Belaire Hwy. • MOBILE, Alabama 36606  
(205) 479-5333

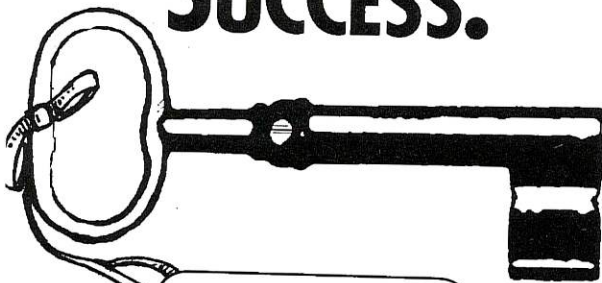
MOBILE

I-65 and Dauphin Street  
Exit #4

Call 800-424-4777

Econo  
Lodge®

THE KEY TO  
OVERNIGHT  
SUCCESS.



Clarion  
**Clarion Hotel**  
**Mobile**

3101 Airport Boulevard • Mobile, AL 36606  
For reservations call 205.476.6400



Willis Corroon Corporation  
of Mobile

*Local Roots  
with a Reach  
that Spans the Globe*

The Wilson Building  
51 St. Joseph Street  
Post Office Box 2407  
Mobile, Alabama 36652  
205-433-0441

Insurance since 1898

# THE POST OFFICE ALTERNATIVE

You can trust the experts at  
**Mail Boxes Etc.®**

to handle your postal,  
business or communication  
needs in over 1,600  
neighborhood locations.



PACKING  
SUPPLIES



MAILBOXES



SHIPPING



FAX



COPIES



STAMPS



OVERNIGHT  
AIR



OFFICE  
SUPPLIES

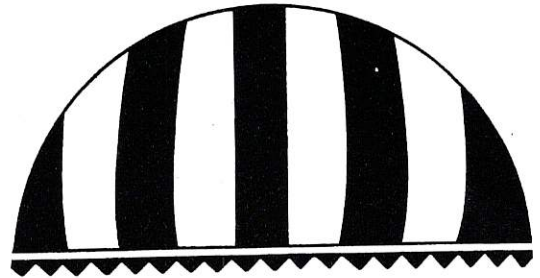
*UPS Authorized Shipping Outlet*



MAIL BOXES ETC.®

4354 A OLD SHELL RD.  
MOBILE, AL 36608  
205-460-0600

*Franchise Independently Owned & Operated.  
©1992 Mail Boxes Etc.*



UNKNOWN  
JEROME'S

*Cafe*

## BASKETBALL MEDIA OUTLETS

### Newspapers

Mobile Register, P.O. Box 2488, Mobile 36630 (205) 433-3467  
The Catholic Week, 356 Government, Mobile 36602, (205) 432-3529  
The SpringHillian, SHC Campus, (205) 380-3850

### Television

WALA-TV, P.O. Box 1548, Mobile (205) 434-1065  
WKRQ-TV, P.O. Box 160587, Mobile 36616, (205) 479-5555  
WEAR-TV, P.O. Box 12278, Pensacola, FL 32581, (205) 438-9030

### Radio

WNTM, P.O. Box 160587, Mobile 36616, (205) 479-4333  
WBLX, P.O. Box 2823, Mobile 36601, (205) 432-9393  
WABB, P.O. Box 2148, Mobile 36601, (205) 438-1480  
WKSJ, P.O. Box 160706, Mobile 36616-1706, (205) 770-2262  
WDLT, 2402 Wolf Ridge Rd., Mobile 36618, (205) 770-9898  
WNSP, 301 Government St., Mobile 36602, (205) 432-4263

# **BOOST THE BADGERS!**

**Join the**

## SPRING HILL COLLEGE ATHLETICS CLUB

**And help to...**

- promote a greater interest in SHC athletics
- provide a forum for involved fans
- improve athletic programs through financial support

**All club members...**

- receive a season pass for all athletic events
- may visit hospitality room at all home basketball games
- are invited to attend special "get together" functions to become better acquainted with coaches, staff and players.

**For information,  
call (205) 380-3489.**

## **Badger Athletic Club Members**

Marshall and Maureen Allu  
Jim Anstey  
Paul W. Baker  
Greg Bernbrock  
Milt Bolling '54  
John Brutkiewicz  
Larry Bush  
John P. Callan, Sr.  
Daniel J. Crane  
William E. Cummins  
Carroll R. Deal  
Ellen H. DiSanto  
Arthur Drago  
Keith Drago  
Stephanie Durggin  
Robert B. Eastman  
M.C. "Connie" Farrell

Rosemary Forte  
James and Barbara Frerman  
J. Casey Healy  
William L. Heiter  
Gayford L. Hinton  
Theodore Hyle, Jr.  
Michael S. Johnson  
Mr. and Mrs. Jerry W. Kelly  
Vincent Labue  
Dwight and Marsha Ladd  
Joseph Langan  
Mr. and Mrs. Frank E. Lee  
Dr. Charles A. Marston  
Allan J. McCarte  
Mac and Libby McCawley  
H.T. McCormick

James B. McDonough, Jr.  
J.F. McGowin  
Tom and Pam McMahon  
James D. McPhillips  
Arlene and Mayer Mitchell  
James J. Mougey  
Herbert R. Noletto, Sr.  
George L. O'Dwyer  
Andre and Bonnie Paille  
Robert L. Parker  
B. Clifford Pringle  
Joseph T. Quina III  
Daniel A. Raniere  
Jim Ringwood  
Daniel E. Reimer  
Otha C. Salter

Jeffry K. Schweitzer  
Andrew D. Sharp  
Brenda Sterling  
Ed Stuardi  
Homer A. Thompson, Jr.  
Mr. and Mrs. Turni  
Luis M. Williams  
Mike and Sue Walsh  
Mr. and Mrs. Joseph Winland

*Thanks to you all!*

# 1994-95 Lady Badgers

